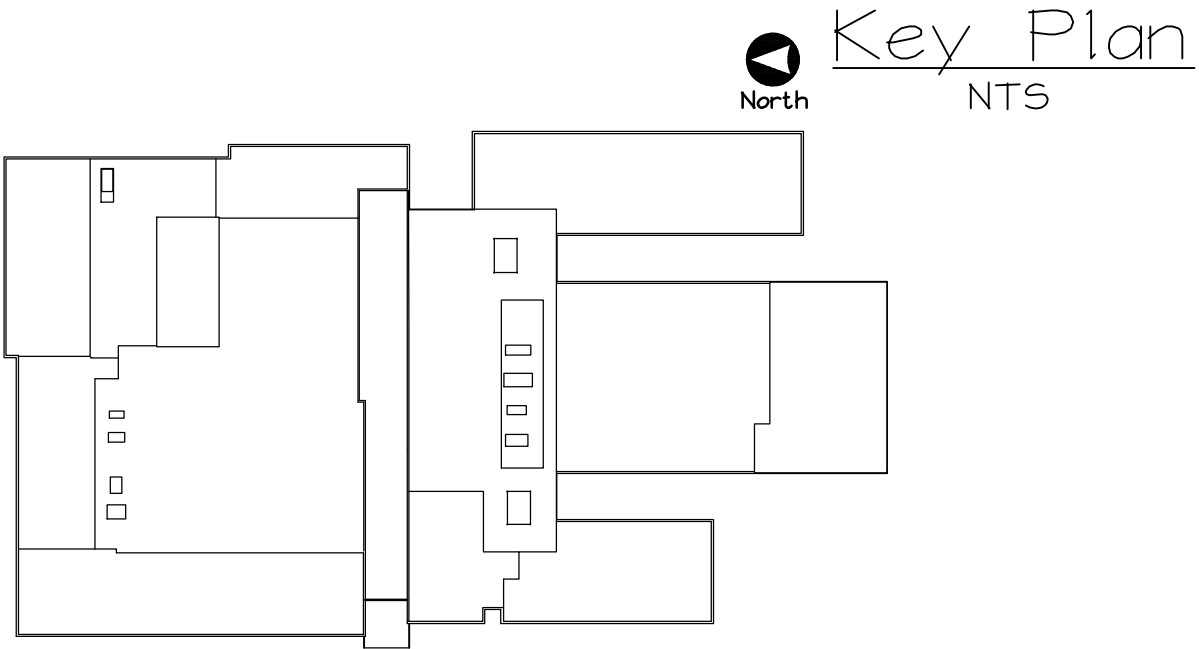


New Junior-Senior High School
Independence Community School District, Independence, IA
Window Shop Drawings - Section 08 45 00 Translucent Wall & Roof Assemblies

ARCHITECT:
HSR Associates
100 Milwaukee Street
La Crosse, WI 54603

GENERAL CONTRACTOR:
Larson Construction Co. Inc.
600 17th Street NE
Independence, IA 50644



SHEET INDEX

1	Title Page
2	Window Elevations Key
3	Window Elevations & Section
4-5	Window Details

DRAWING APPROVAL:
We have reviewed these drawings and approve their use for construction of the windows and skylights. Any comments or suggestions have been added to the drawings.

Architect:
HRS Associates
name _____
title _____

General Contractor:
Larson Construction Co. Inc
name _____
title _____

PRODUCT DATA:
Fixed Windows Glazing: 25 mm structured polycarbonate system. U-factor = 0.26, LT = 49%, UV resistant.
Finish: Extruded aluminum members and flashings to have a 7 mil, fluoropolymer coating. Color to be Linetec "Slate Gray" to match the curtainwall system finish, Manko "Slate Gray", chart provided under separate cover.
Warranty: Windows and Finish, including leakage, 5 years. Glazing, including yellowing and LT, 10 years.
Product Approval: Wisconsin Solar Design is an approved manufacturer per addendum #1.
Energy Performance: Per section 084500.1.04.H/I, windows meet IEC requirements and have been tested in accordance with the specified NFRC standards. Please see test reports submitted under separate cover.
Manufacturer: Wisconsin Solar Design, Inc.
Installer Certification: Installers are full-time employees of WSD and are certified by the manufacturer.
Structural: See Structural Calculations submitted under separate cover.

NOTES:
1. G.C.: Please verify rough opening sizes shown herein for fixed windows, p. 2. G.C. Confirmed dimensions will be the basis for window fabrication.



I hereby certify that this engineering document was prepared by me or under my direct personal supervision and that I am a duly licensed Professional Engineer under the laws of the State of Iowa.

signature date

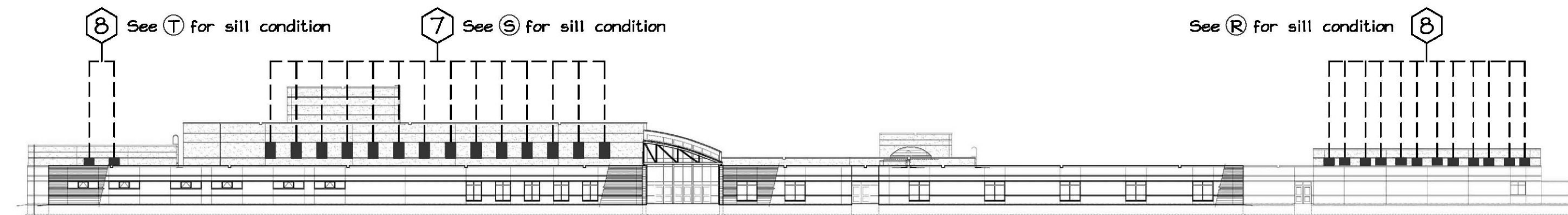
Printed or typed name **Fred Holtzman**

My license renewal date is December 31, 2012.
Pages or sheets covered by this seal: **1 - 21**

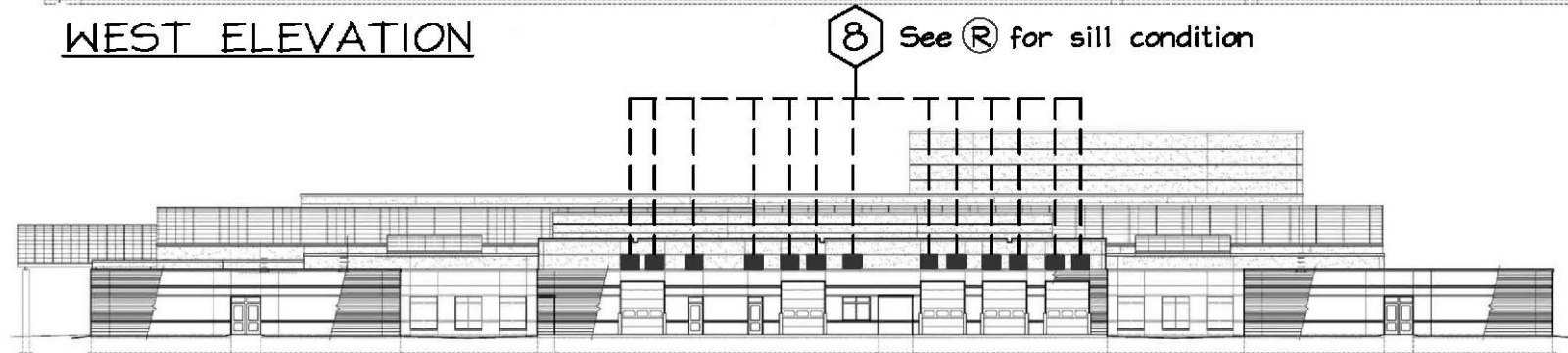
Manufacturer/Installer:
WISCONSIN SOLAR DESIGN
6349 Briarcliff Ln., Middleton, WI 53562

Project:
New Jr.-Sr. High School
700 20th Ave. SW
Independence, IA 50644

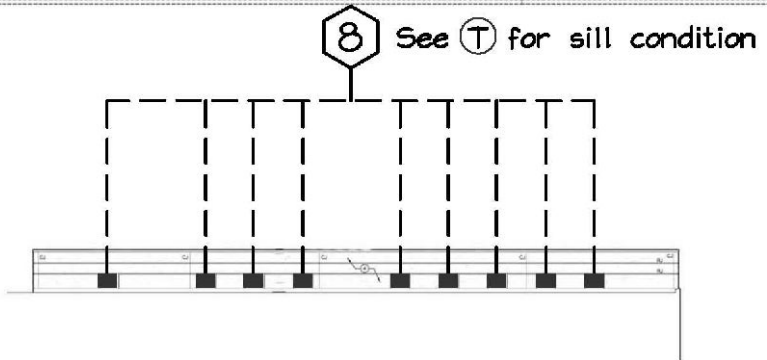
Architect:
HSR Associates, Inc.
100 Milwaukee Street
La Crosse, Wisconsin



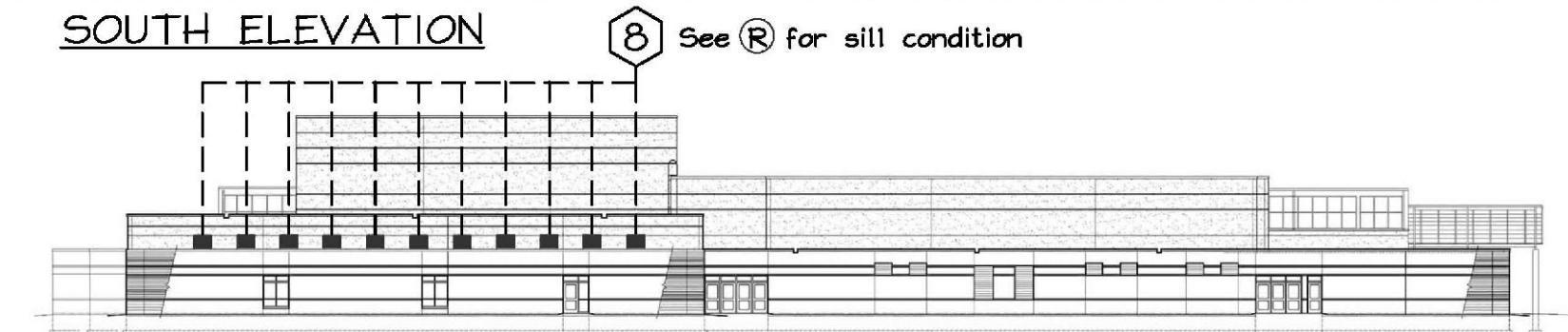
WEST ELEVATION



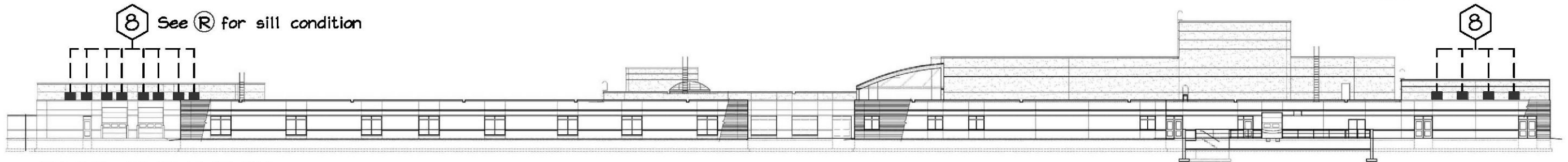
SOUTH ELEVATION



PARTIAL SOUTH ELEVATION



NORTH ELEVATION



EAST ELEVATION

WINDOW LOCATIONS

- 7 Window Type 7, (14) thus
- 8 Window Type 8, (59) thus

Manufacturer/Installer:

WISCONSIN SOLAR DESIGN

6349 Briarcliff Ln., Middleton, WI 53562

Project:

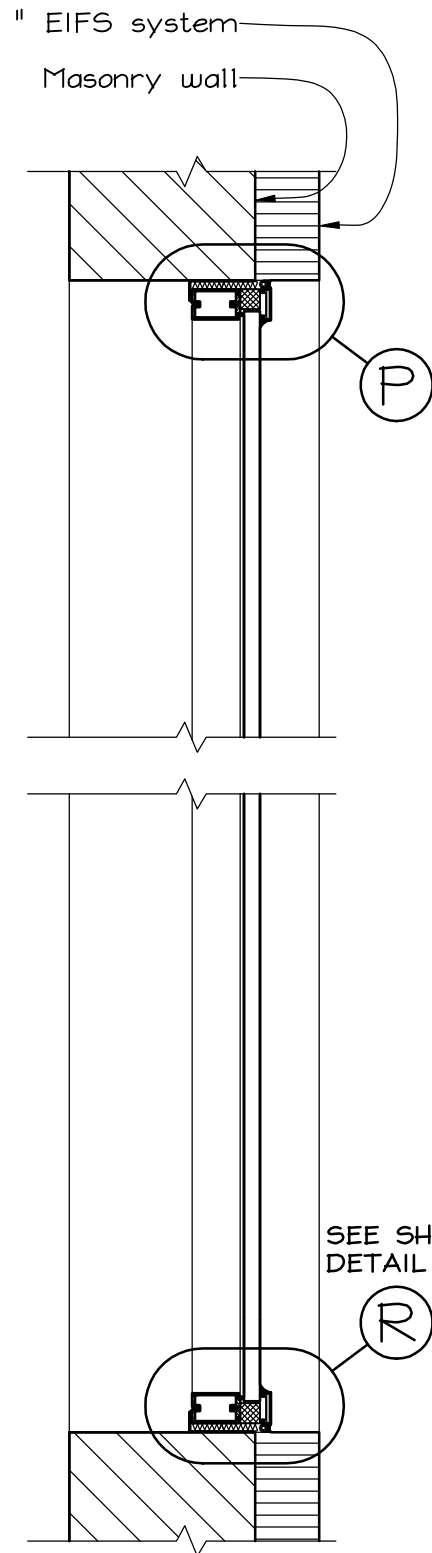
New Jr.-Sr. High School
700 20th Ave. SW
Independence, IA 50644

Architect:

HSR Associates, Inc.
100 Milwaukee Street
La Crosse, Wisconsin

2 of 5

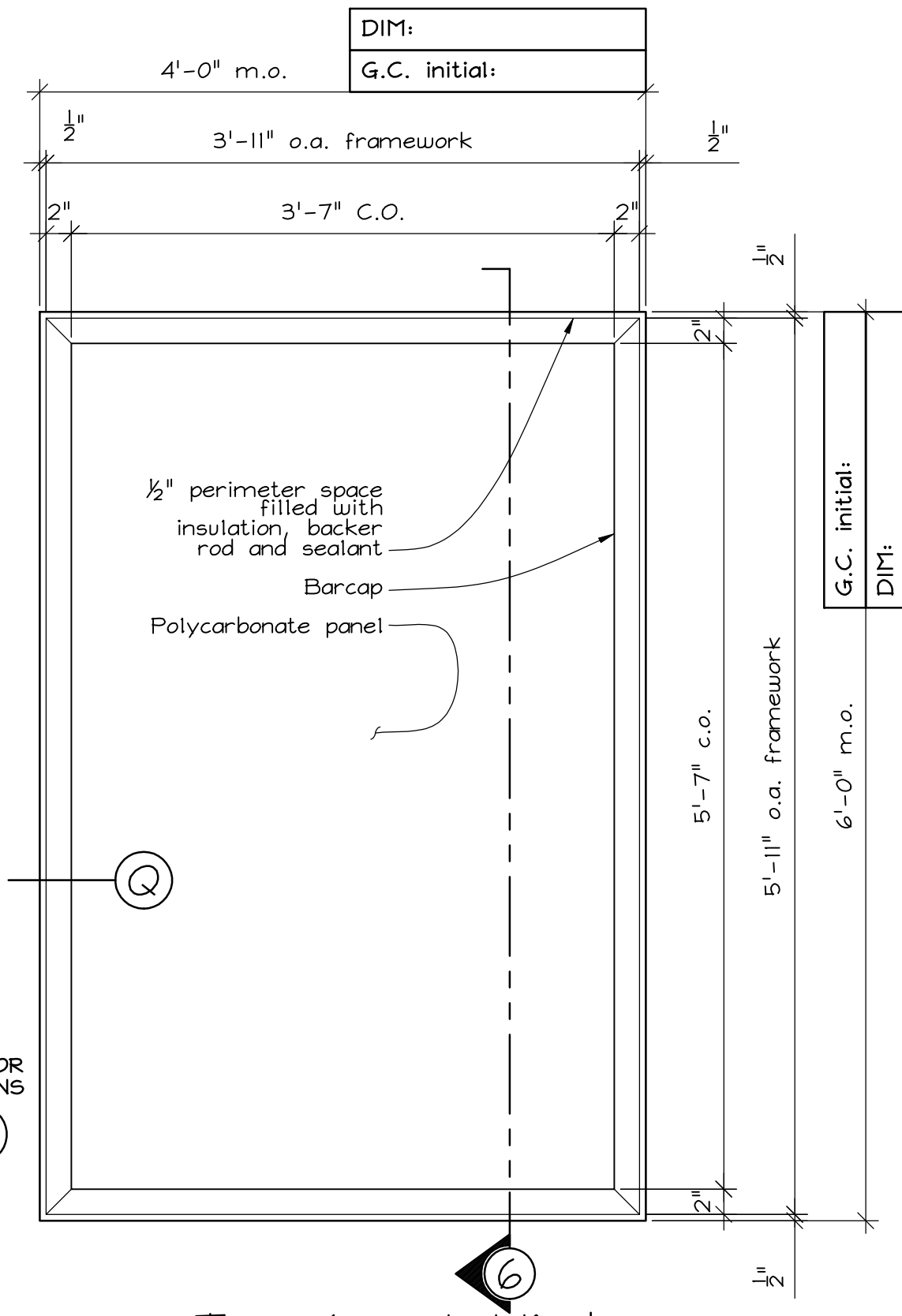
Issued:
9/17/12



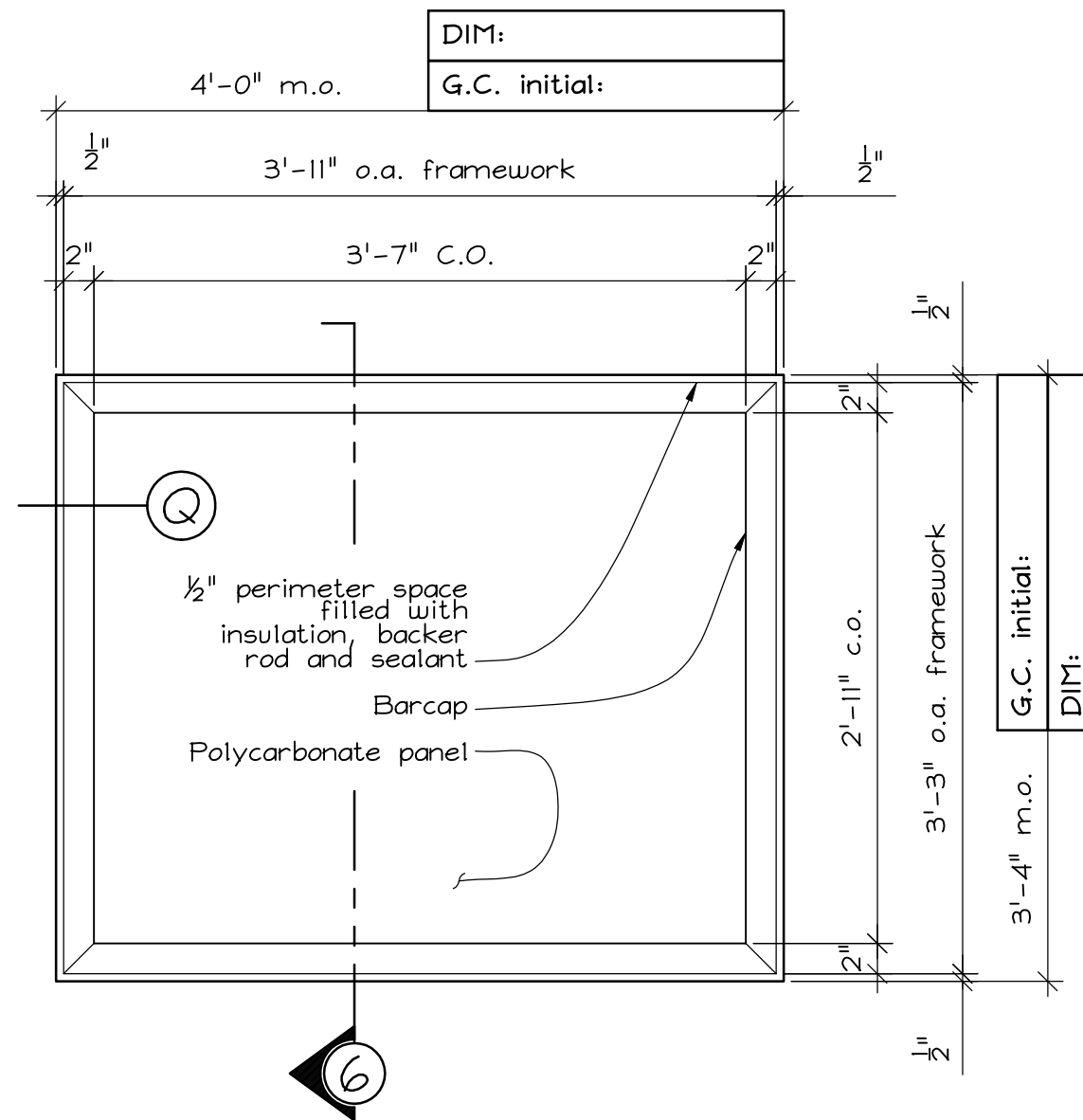
⑥
Cross-Section
Scale: 1"=1'-0"

SEE SHEET 18 FOR
DETAIL LOCATIONS

⑥ ⑦ ⑧ ⑨ ⑩ ⑪ ⑫ ⑬ ⑭ ⑮ ⑯ ⑰ ⑱ ⑲ ⑳ ㉑ ㉒ ㉓ ㉔ ㉕ ㉖ ㉗ ㉘ ㉙ ㉚ ㉛ ㉜ ㉝ ㉞ ㉟ ㊱ ㊲ ㊳ ㊴ ㊵ ㊶ ㊷ ㊸ ㊹ ㊺ ㊻ ㊼ ㊽ ㊾ ㊿



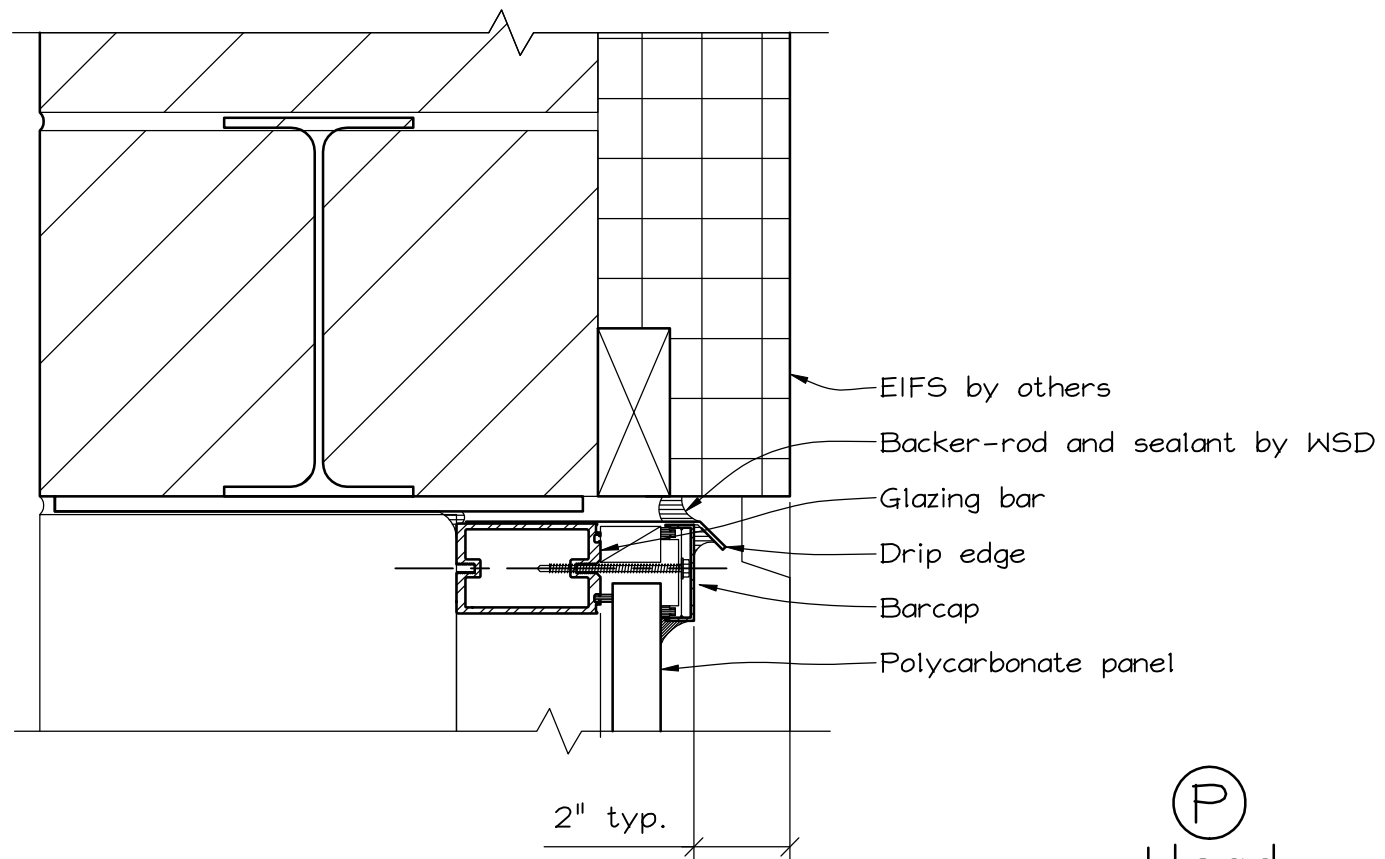
Translucent Window
Type 7 Elevation
(14) Thus
Reference 7/A612
Scale: 1"=1'-0"



Translucent Window
Type 8 Elevation

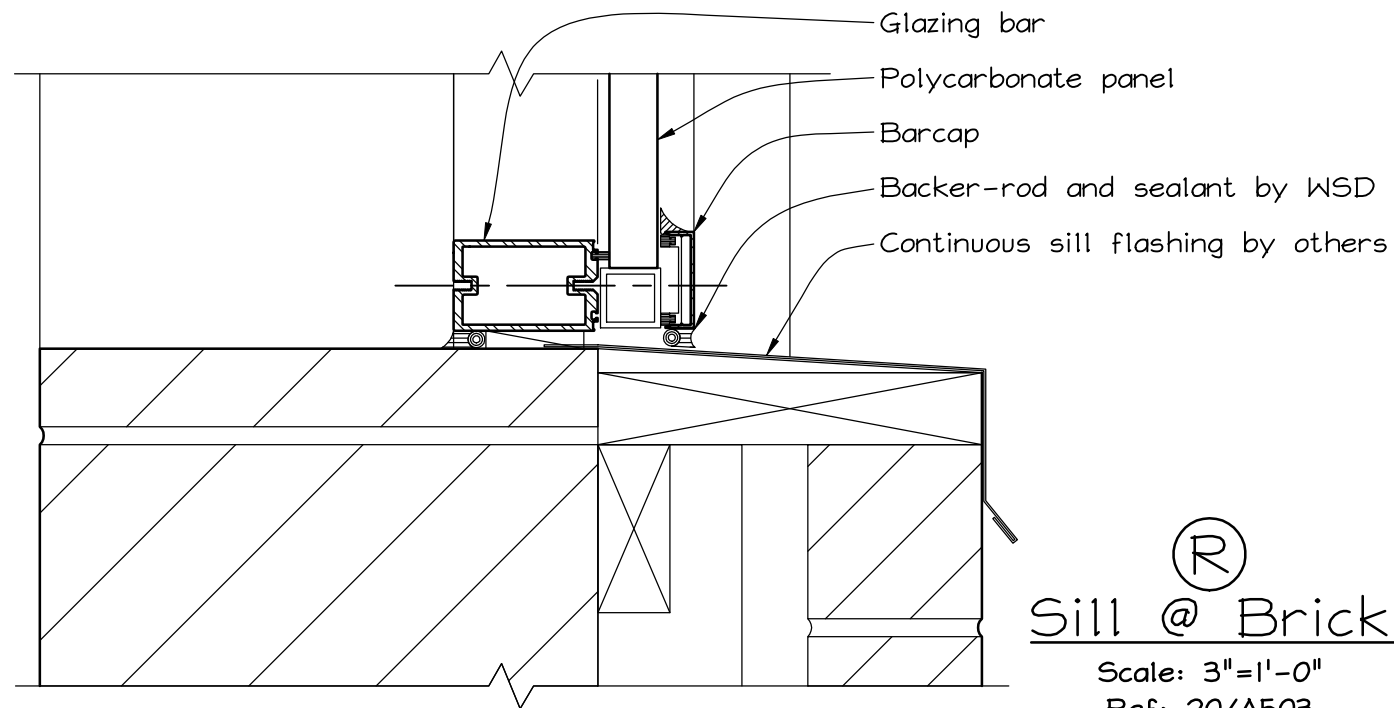
(59) thus
Reference 8/A612
Scale: 1"=1'-0"

G.C. Please confirm masonry
opening dimensions on this
sheet by initialing in the
space provided. Confirmed
opening dimensions will be the
basis of fabrication.



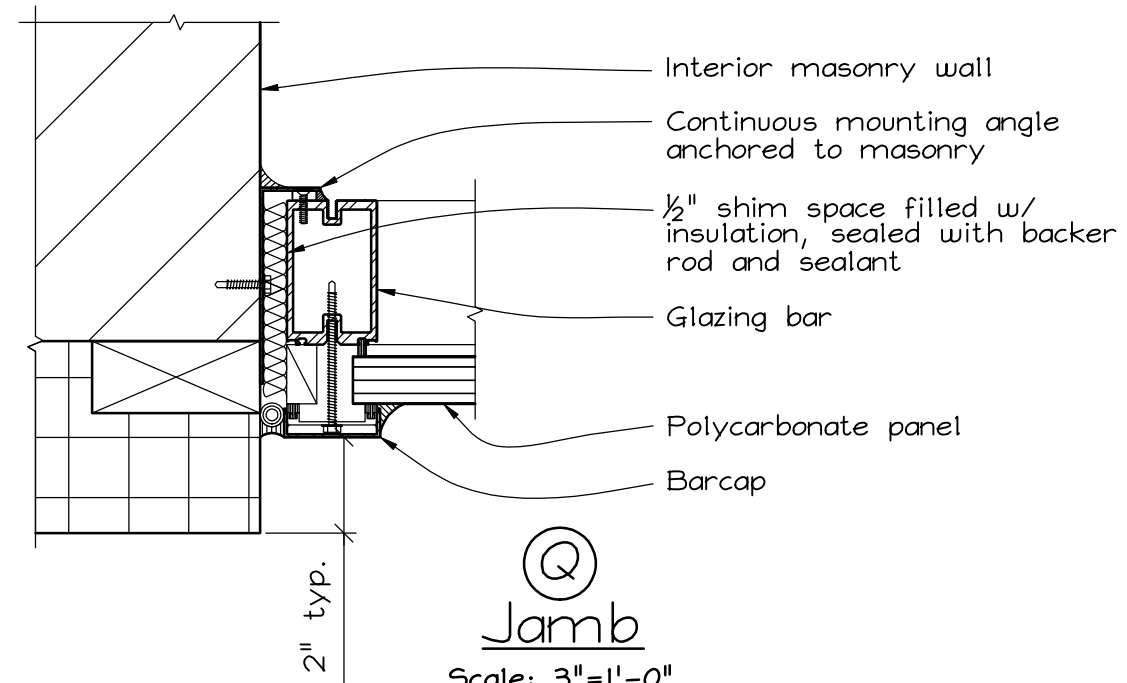
(P)
Head

Scale: 3"=1'-0"
Ref: 21/A503 & 7/A504



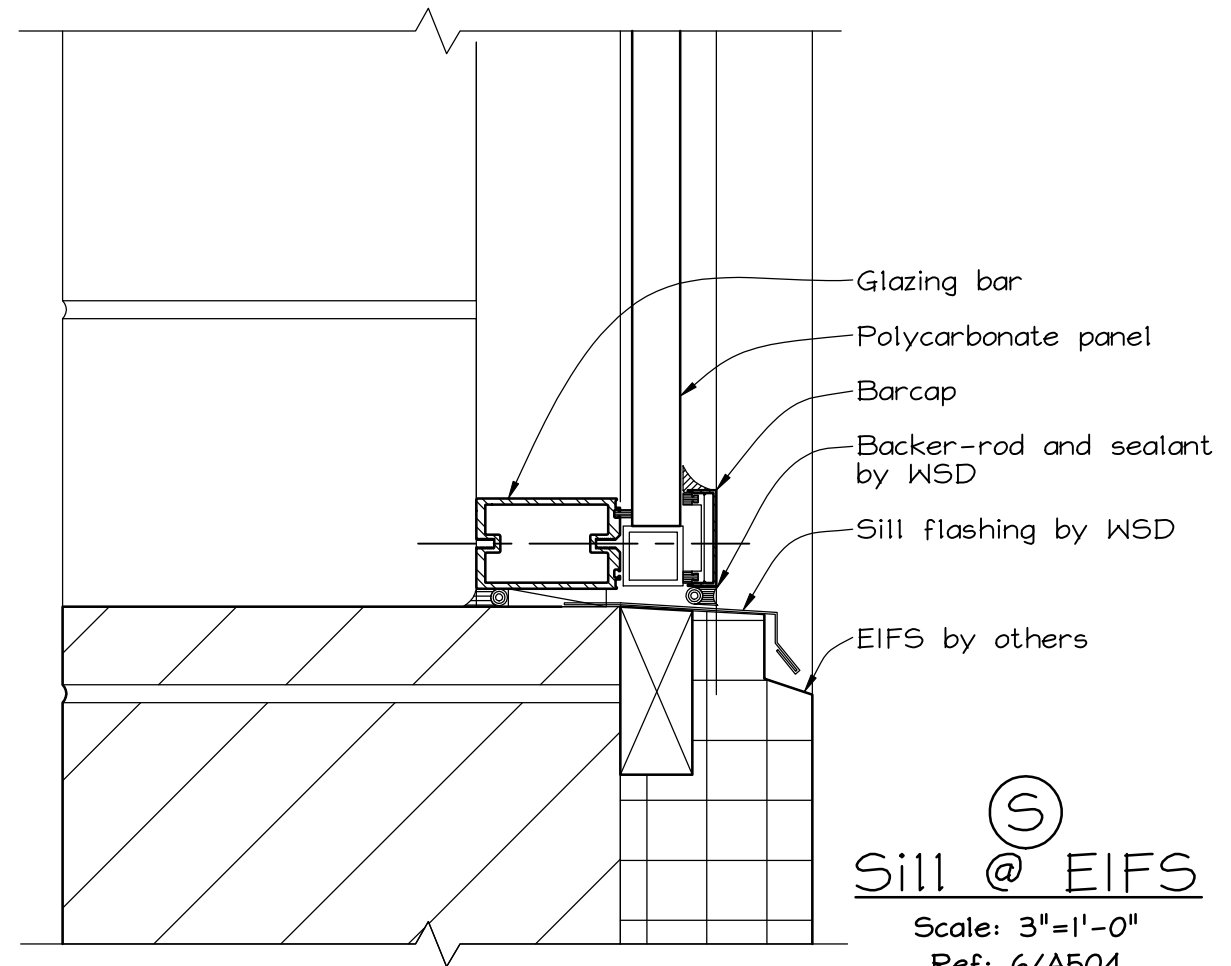
(R)
Sill @ Brick

Scale: 3"=1'-0"
Ref: 20/A503



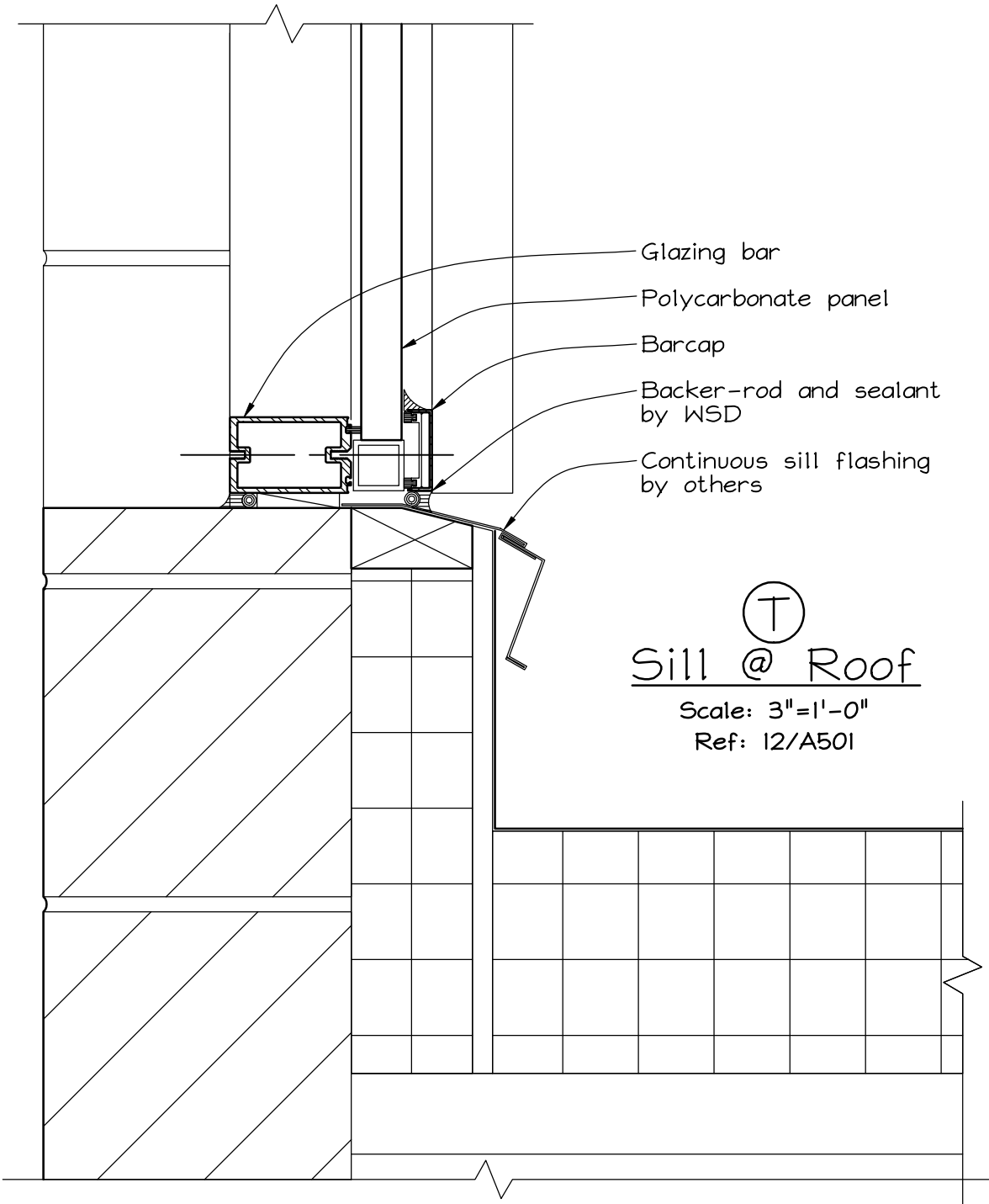
(Q)
Jamb

Scale: 3"=1'-0"
Ref: 10/A504



(S)
Sill @ EIFS

Scale: 3"=1'-0"
Ref: 6/A504



Ⓣ
Sill @ Roof
Scale: 3"=1'-0"
Ref: 12/A501