

NEW JUNIOR HIGH SCHOOL - CONCORD CSD

COUNTY ROADS 11/24, ELKHART, IN 46517

SKYLIGHT SHOP DRAWINGS - SECTIONS 086200 & 086300

DRAWING APPROVAL:

We have reviewed these drawings and approve their use for construction of the skylights. Any comments or suggestions have been added to the drawings.

Architect:

name _____
 printed _____
 title _____ date _____

General Contractor:

name _____
 printed _____
 title _____ date _____

Glazing Contractor:

name _____
 printed _____
 title _____ date _____

PRODUCT DATA, SECTION 086200 - UNIT SKYLIGHTS

Glazing: Clear over clear polycarbonate. Skylights meet OSHA fall protection guidelines.

Framework: Extruded aluminum curb frame and retaining angle. Clear anodized coating complying with AAMA 611-98, 0.4-0.7 mil thick minimum.

Integral curb: Interior finish is factory applied fluoropolymer 2-coat, 70% Kynar coating complying with AAMA 2604-98. Architect please select color choice from enclosed color chart. Exterior finish is mill.

Warranty: Skylight system, including leakage, 5 years.

PRODUCT DATA, SECTION 086300 - METAL FRAMED SKYLIGHT

Glazing: 1/4" solar gray tinted tempered exterior lite over 1/2" clear laminated annealed inner lite w/ .030" PVB interlayer, 1-1/4" o.a.

Framework: Extruded aluminum with Class I clear anodized finish.

Warranty: Skylight system, including leakage, 10 years.

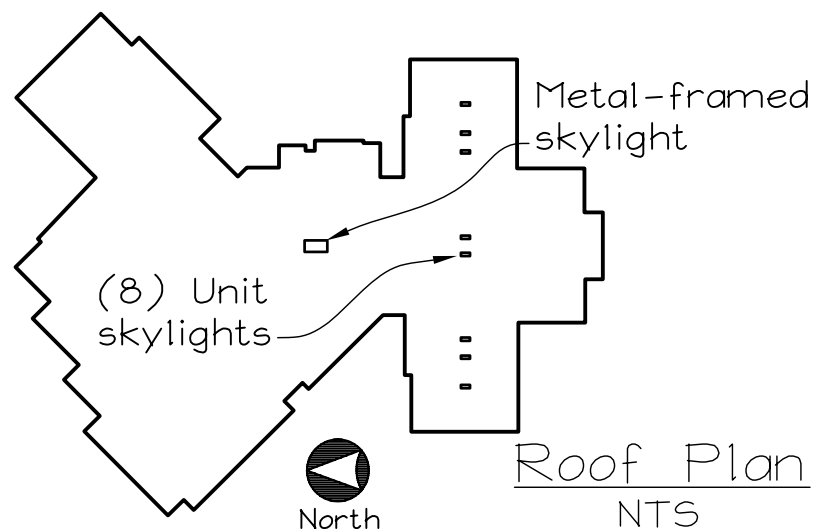
Design Loadings: See structural calcs.

PRODUCT APPROVAL

WSD is an approved manufacturer per addendum #2 and in writing by Kyle Hewson, AIA, Barton-Coe-Vilamaa, 1/24/2008.

NOTES

1. Glazing Contractor please indicate out-to-out curb and inside blocking dimensions on pages 2 & 3 of 8 where noted thus *. Skylight fabrication will be based on these confirmed dimensions.
2. WSD will manufacture and install the skylights as a subcontractor to SPS Corporation.



INDEX

1. Title page
2. Metal-framed skylight plan
3. Unit skylight plan
4. Skylight elevations
5. Metal-framed skylight section
6. Unit skylight sections
7. Metal-framed skylight details
8. Unit skylight details

Drawings by: Keith Behrend, EIT
 Wisconsin Solar Design

ARCHITECT:

Barton-Coe-Vilamaa Architects & Engineers
 225 Airport North Office Park
 Fort Wayne, IN 46825

GLAZING CONTRACTOR:

SPS Corporation
 3502 Independence Drive
 Fort Wayne, IN 46898

GENERAL CONTRACTOR:

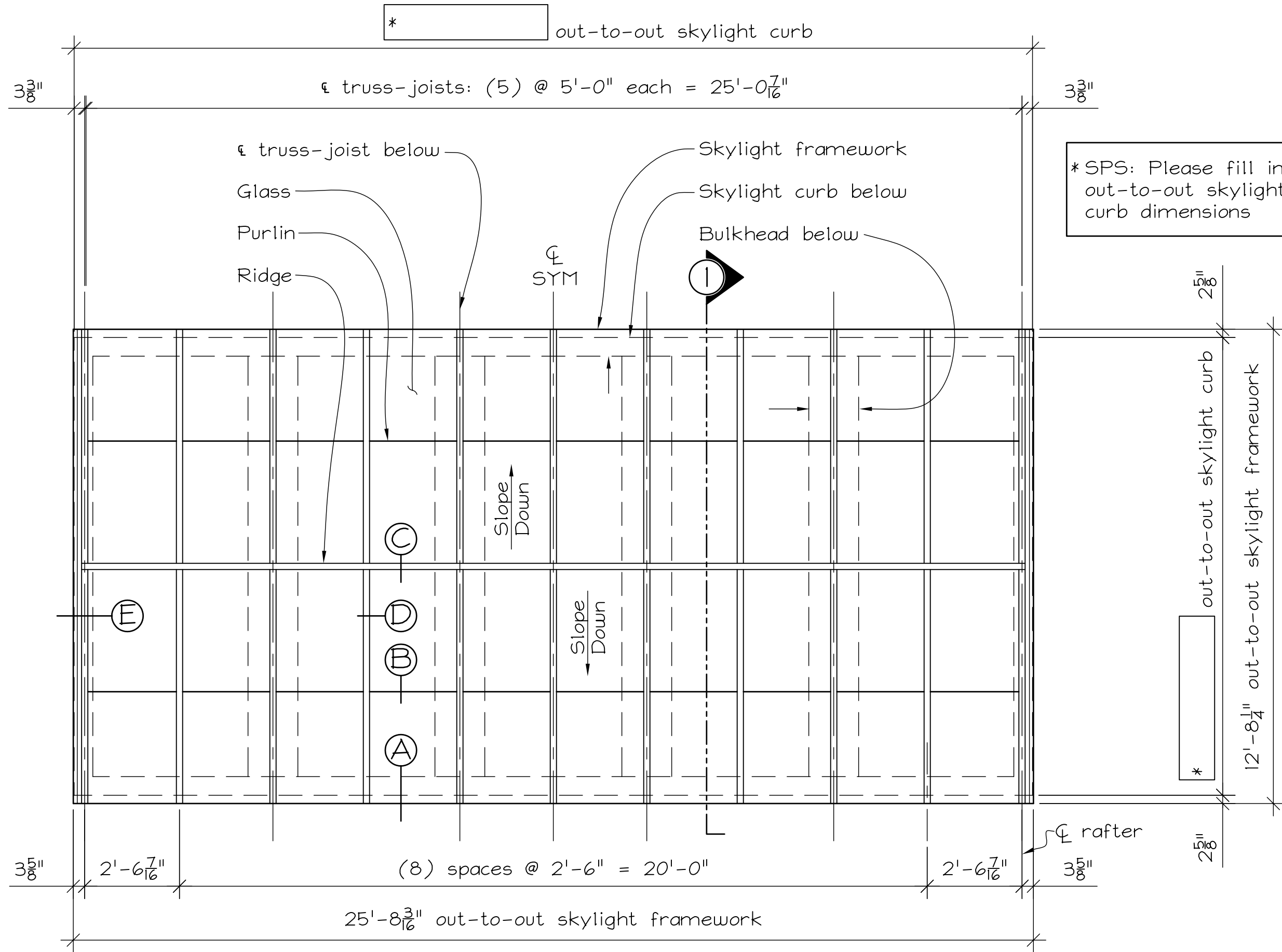
Fettters Construction
 5417 County Rd. 427
 Auburn, IN 46706

Manufacturer/Installer:
WISCONSIN SOLAR DESIGN
 6349 Briarcliff Ln., Middleton, WI 53562

Glazing Contractor:
 SPS Corporation
 3502 Independence Drive
 Fort Wayne, IN 56898

Architect:
 Barton-Coe-Vilamaa Architects
 & Engineers
 225 Airport N Office Park
 Fort Wayne, IN 46825

1 of 8
 Issued:
 07/10/08



METAL-FRAMED SKYLIGHT PLAN

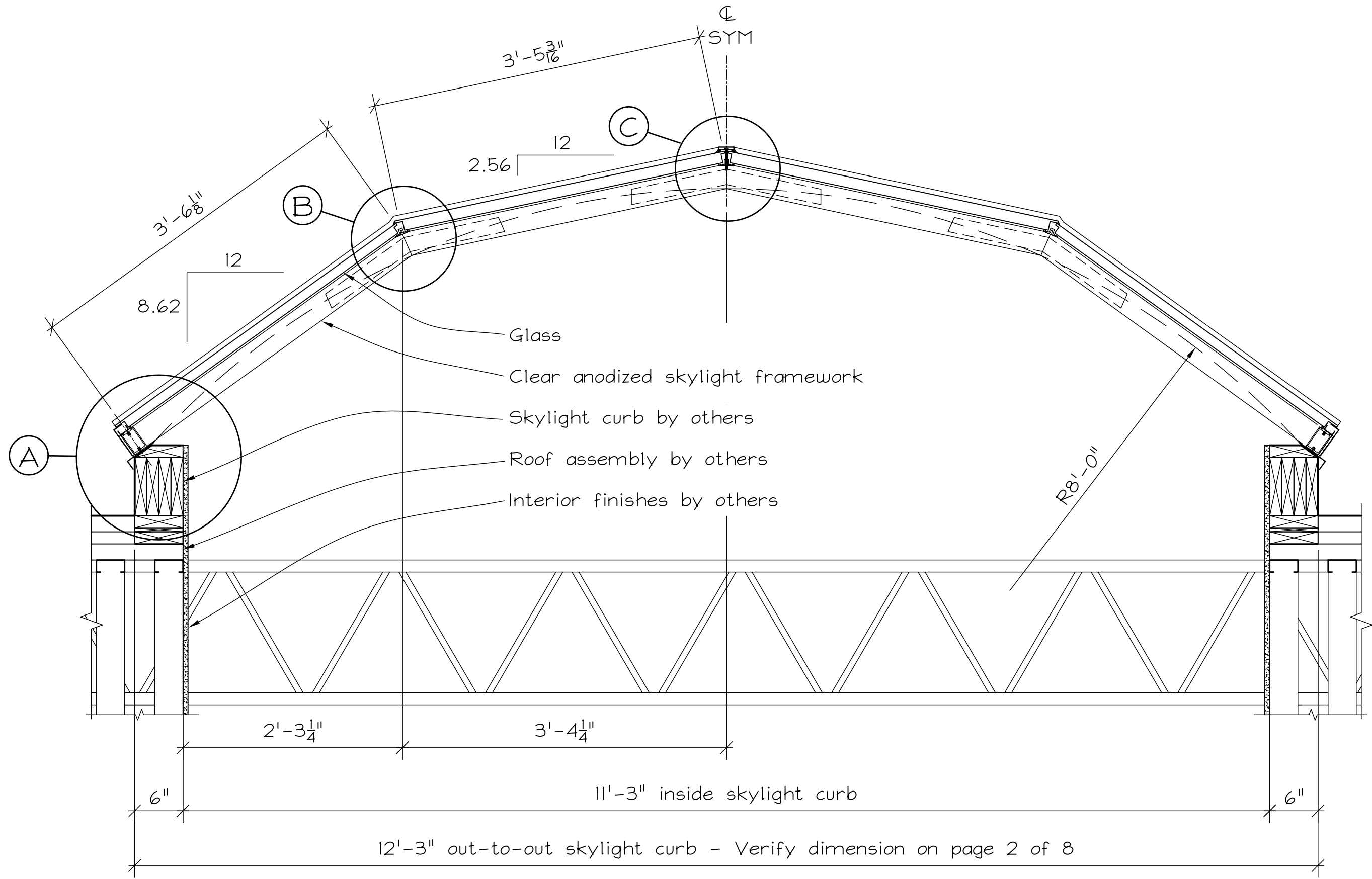
Scale: 3/8"=1'-0"

Architect:
Barton-Coe-Vilamaa Architects
& Engineers
225 Airport N Office Park
Fort Wayne, IN 46825

Glazing Contractor:
SPS Corporation
3502 Independence Drive
Fort Wayne, IN 56898

Manufacturer/Installer:
WISCONSIN SOLAR DESIGN
6349 Briarcliff Ln., Middleton, WI 53562

2 of 8
Issued:
07/10/08



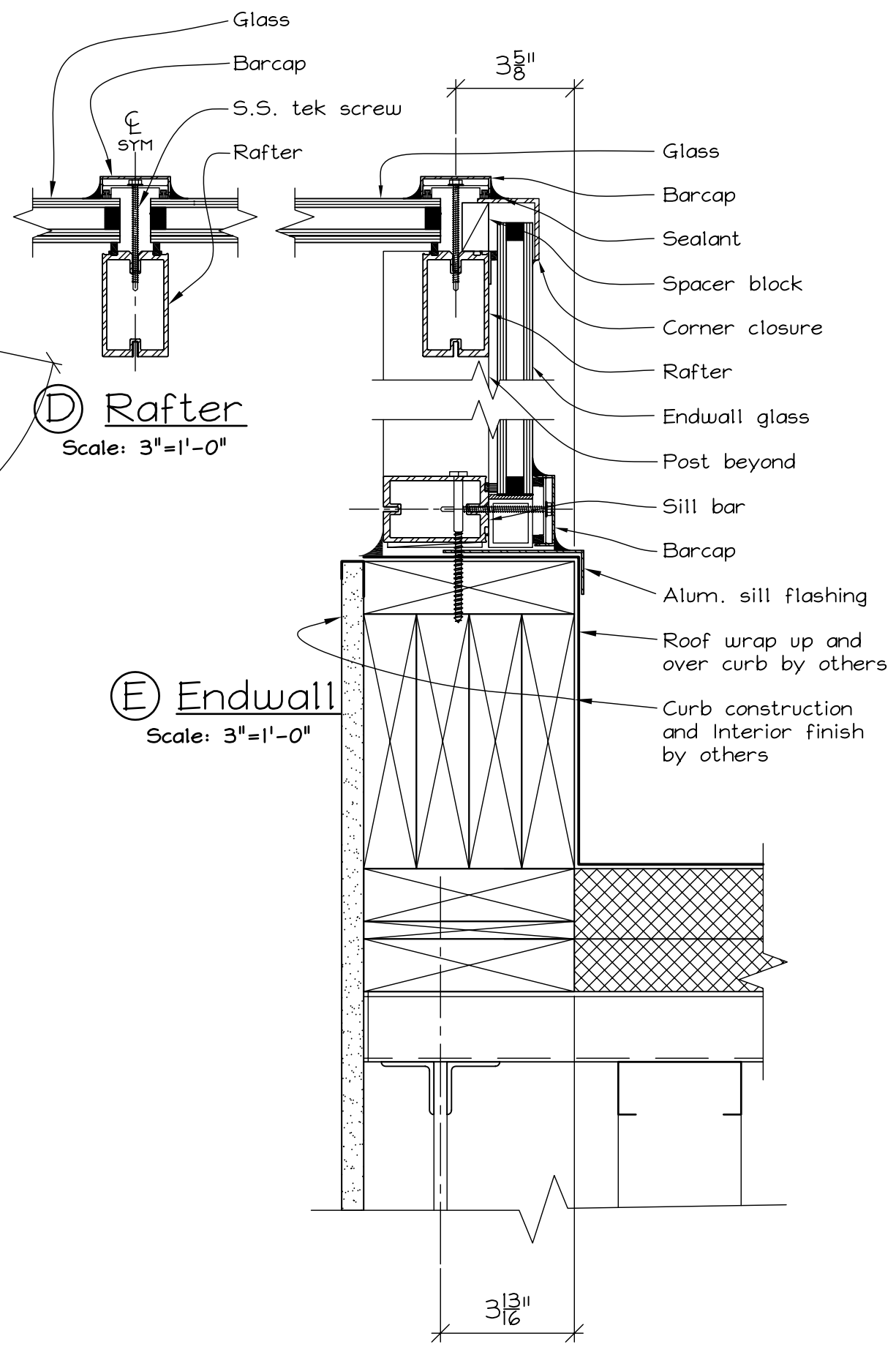
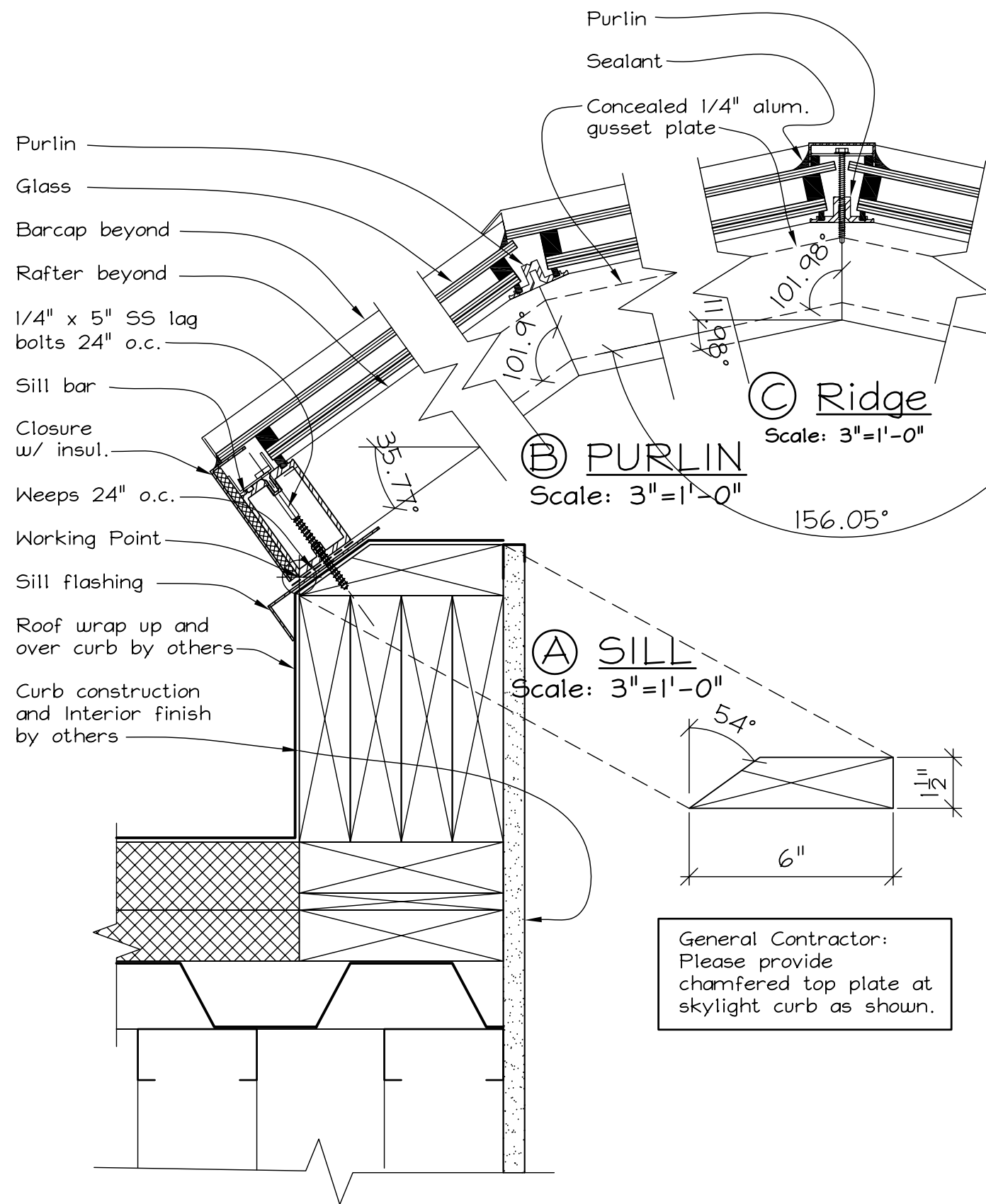
① CROSS SECTION
 Scale: 1"=1'-0"

Manufacturer/Installer:
WISCONSIN SOLAR DESIGN
 6349 Briarcliff Ln., Middleton, WI 53562

Glazing Contractor:
 SPS Corporation
 3502 Independence Drive
 Fort Wayne, IN 56898

Architect:
 Barton-Coe-Vilamaa Architects
 & Engineers
 225 Airport N Office Park
 Fort Wayne, IN 46825

5 of 8
 Issued:
 07/10/08



General Contractor:
Please provide
chamfered top plate at
skylight curb as shown.

Manufacturer/Installer:
WISCONSIN SOLAR DESIGN
6349 Briarcliff Ln., Middleton, WI 53562

Glazing Contractor:
SPS Corporation
3502 Independence Drive
Fort Wayne, IN 56898

Architect:
Barton-Coe-Vilamaa Architects
& Engineers
225 Airport N Office Park
Fort Wayne, IN 46825

7 of 8
Issued:
07/10/08